

Disassembly & Assembly

Kairos-14

(646BED/641BED)

(646BEF/641BEF)

Mobile Comm. Division NC HW개발2그룹

1. System



※ Turn off the power before disassembling the system.

Rear Disassembly

- Remove Rubber (4 places)
- Disassemble screw (4 places)



1. System

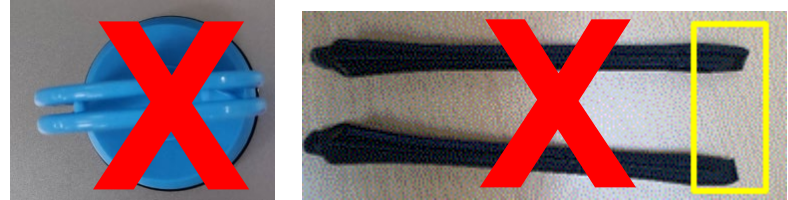
1



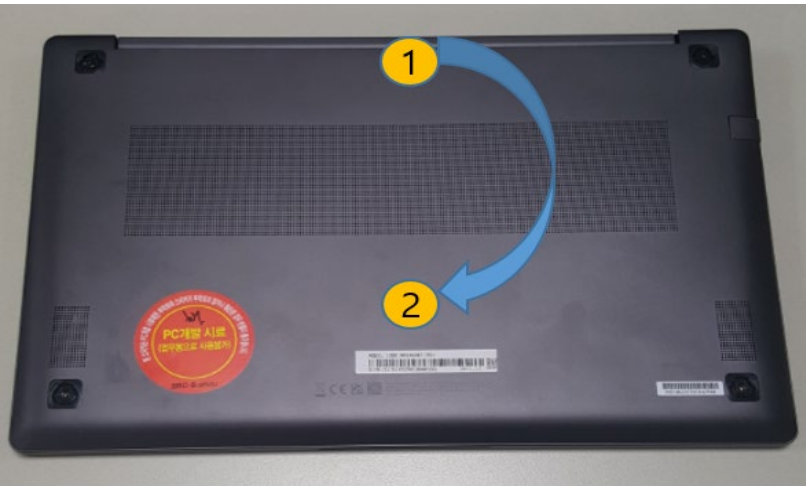
Rear Disassembly

1. Insert Jig between Front and Rear disassemble hook from left to right
2. Open the Rear by Hand : insert hand into ①, pull the Rear
3. Rear Disassembly completion

※ Do not use this tool



2



3



※ Rear case is thin. Be careful not to damage during disassembly

1. System

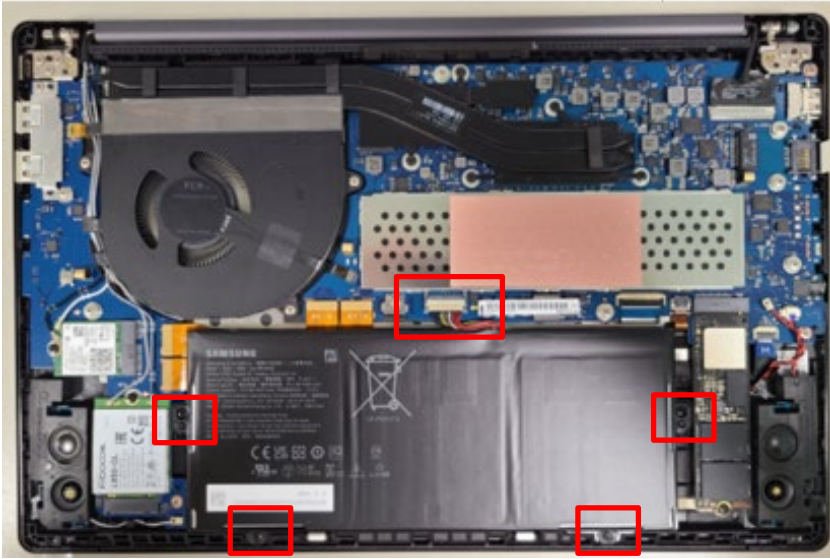


Detach Graphite sheet - SSD

- BA02-02889A



1. System



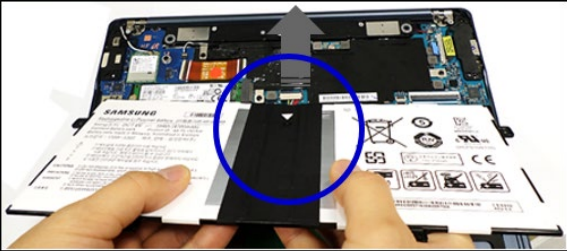
Battery Disassembly

- Disassemble screw (4 places) and remove Battery

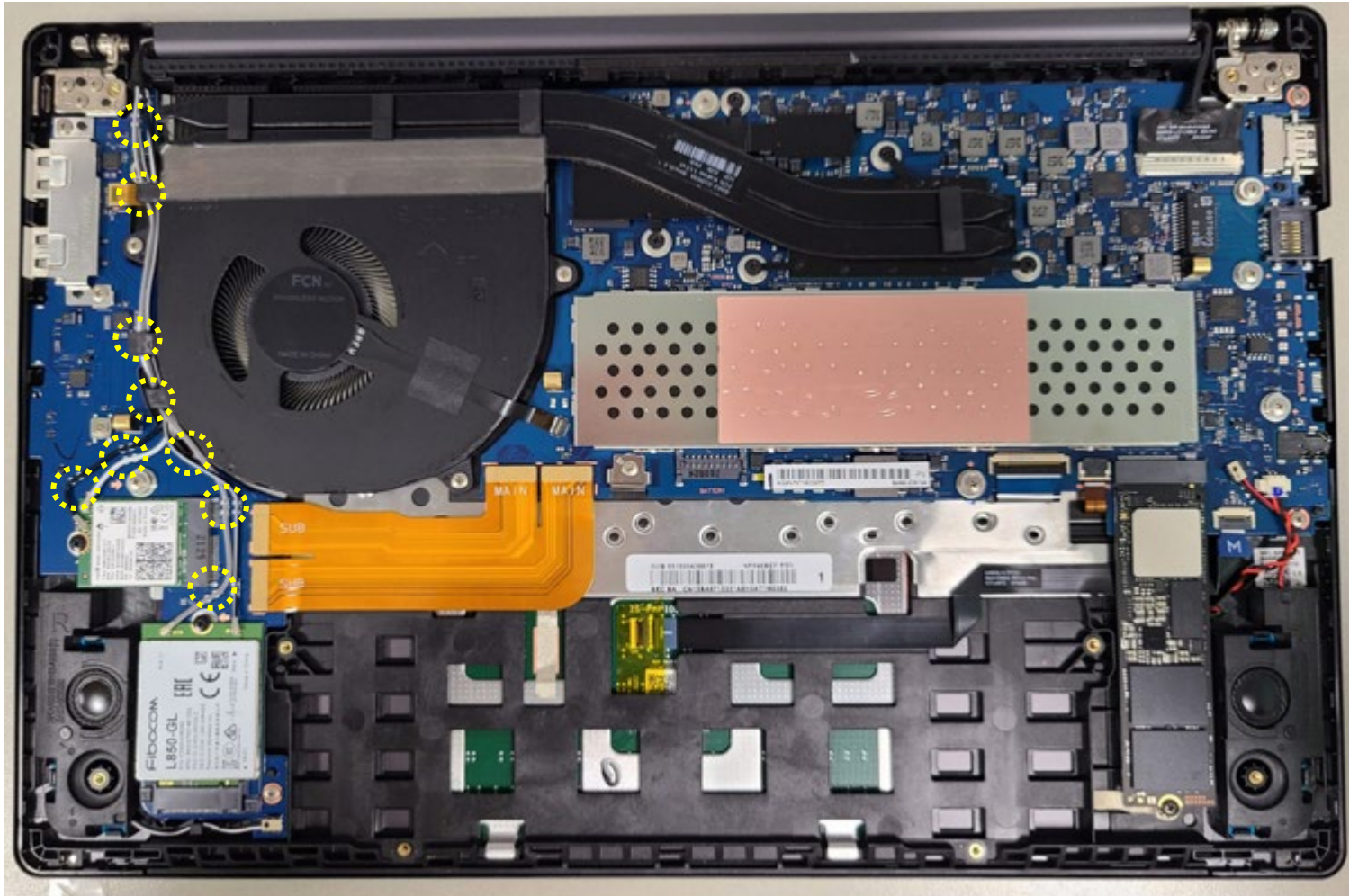


Battery Connector

- Pull the battery and remove it.



※ Do not pull the battery cable apart.
(There is a risk of disconnection)



Antenna Disassembly

- Disassemble the antenna cable from the WLAN module and disconnect the cable assembled in the clip.
- Also disassemble the antenna cable from the LTE module and disconnect the cable assembled in the clip. (LTE model only)

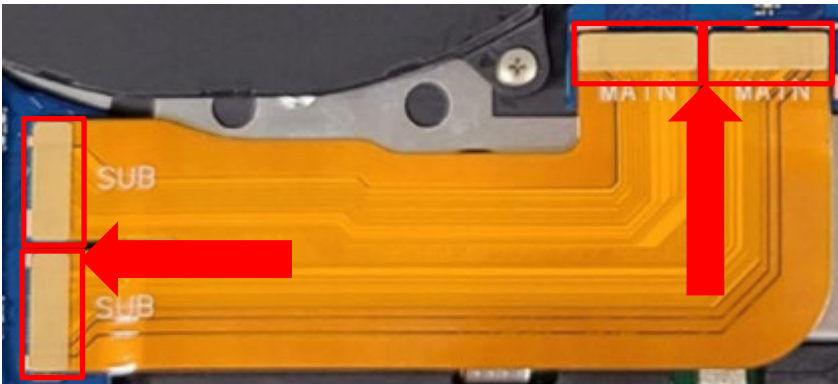


SSD Disassembly

- Disassemble Screw and separate SSD from Connector

FPC Disassembly

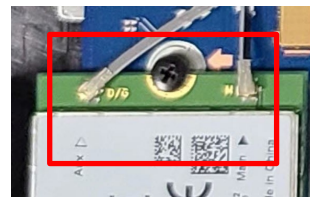
- Separate FPC from Connector. (4 places)
 - ※ carefully detach double-side tape under FPC
- Detach Connectors like left picture's direction
 - ※ If detach it from downside, FPC can be damaged





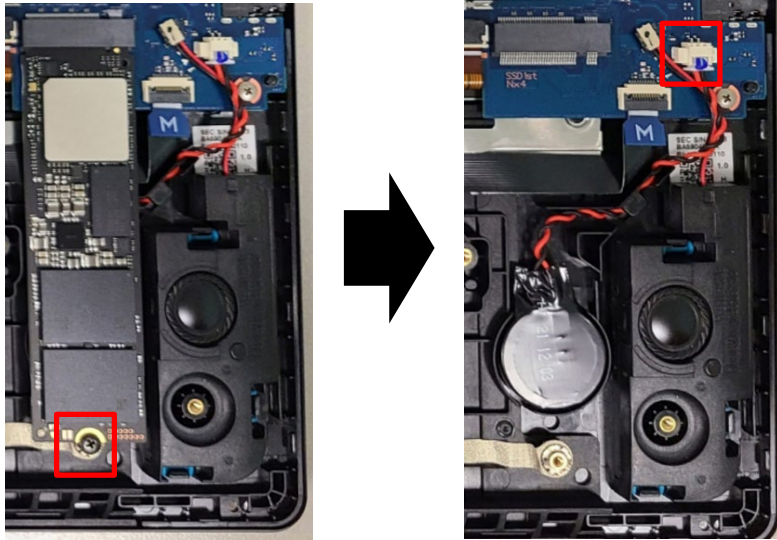
WLAN module Disassembly

- Disassemble Screw and separate WLAN module from Connector
- When you assemble cable, Please match the color between label and cable



LTE module Disassembly (LTE Model only)

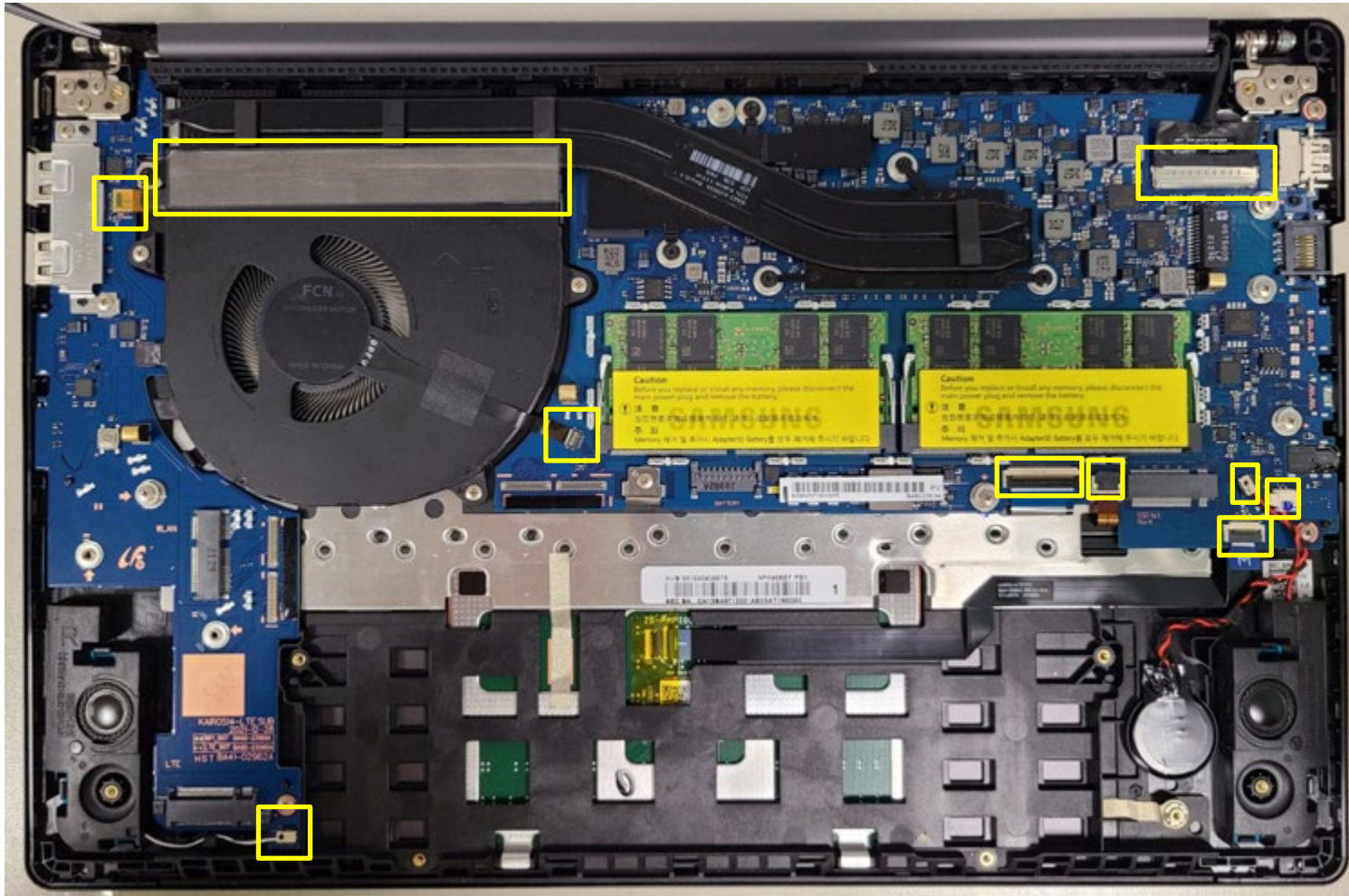
- Disassemble Screw and separate LTE module from Connector
- When you assemble cable, Please match the color between label and cable



RTC battery Disassembly

- Disassemble SSD first,
and then you can disassemble RTC battery

1. System



② disassemble conn.

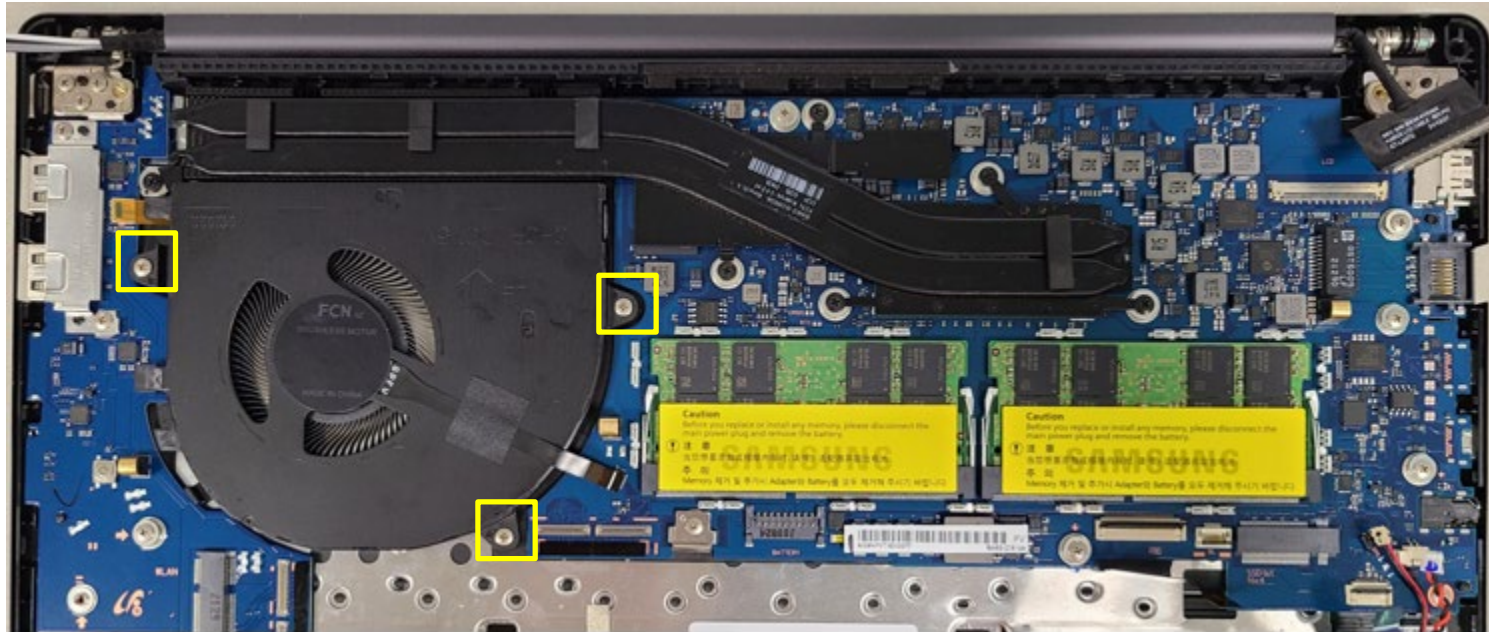


① disassemble bar

FPC / FFC / Cable / Graphite sheet Disassembly

- Separate FPC / FFC / Cable from Connector.
- Detach Graphite sheet (Once you remove it, **Do not Re-use it.** material code BA02-03595A)

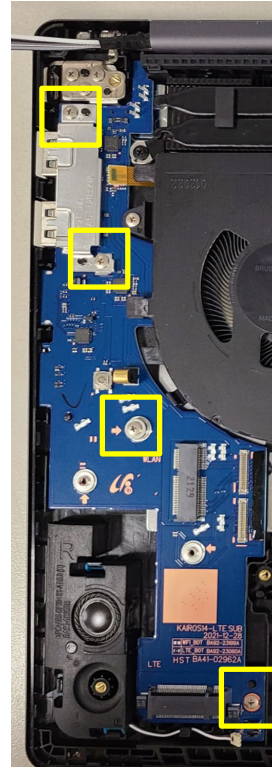
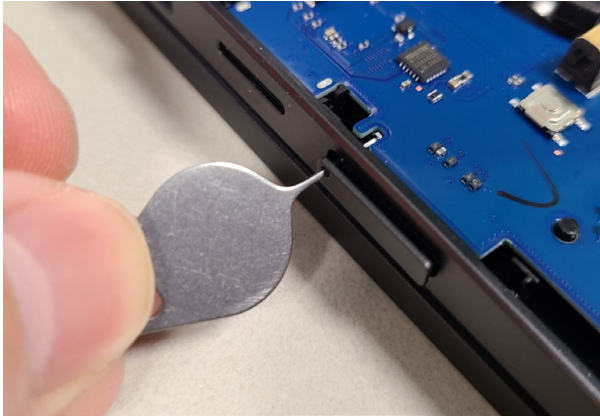
1. System



Fan Disassembly

- Remove and disassemble the screw for fixing the fan. (3 places)

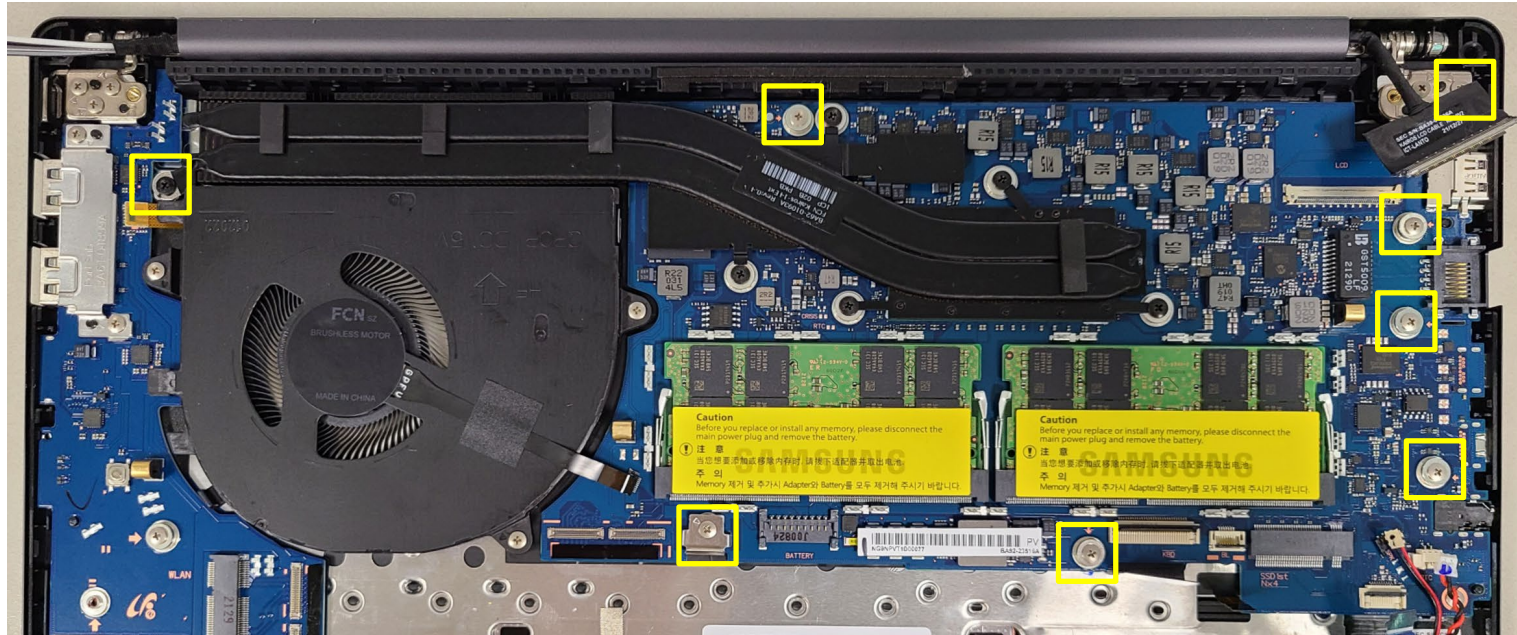
1. System



Sub Board Disassembly

- Remove sim tray first (LTE model only)
- Disassemble the screw and bracket for fixing the sub board. (4 places)

1. System



Main Board Disassembly

- Remove and disassemble the screw for fixing RHE (1 places) and Main Board. (7 places)



LCD Assy Disassembly

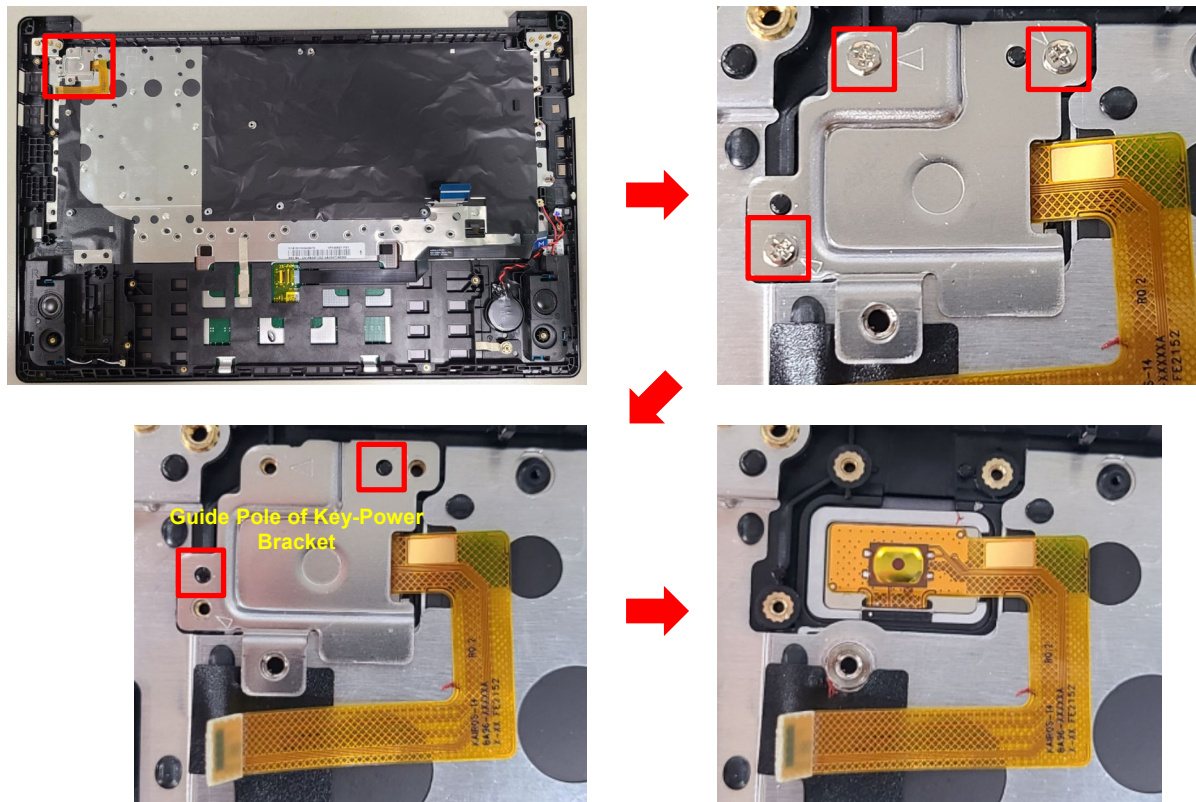
- Remove and disassemble the hinge screw for fixing LCD Assy. (6 places)

2. LCD Assy



※ LCD assy can not be disassembled

3. Key Power Module (Finger Print)



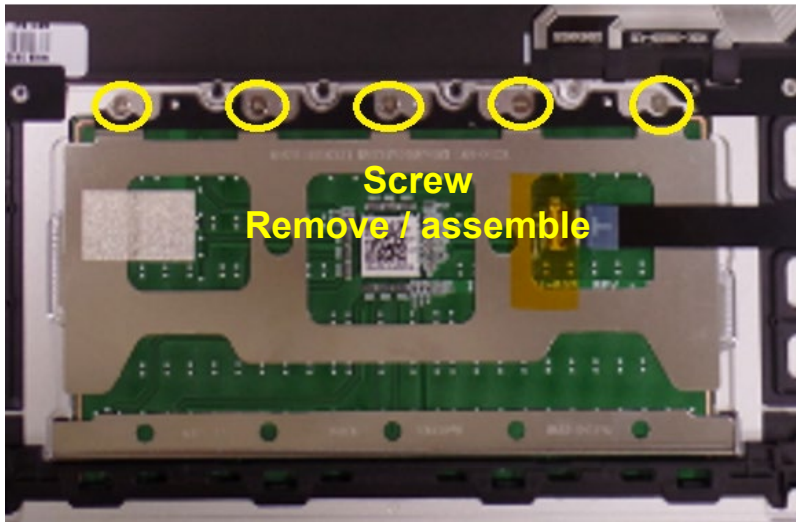
Key Power Module Disassembly

- Remove and disassemble the bracket that fixes the key power.

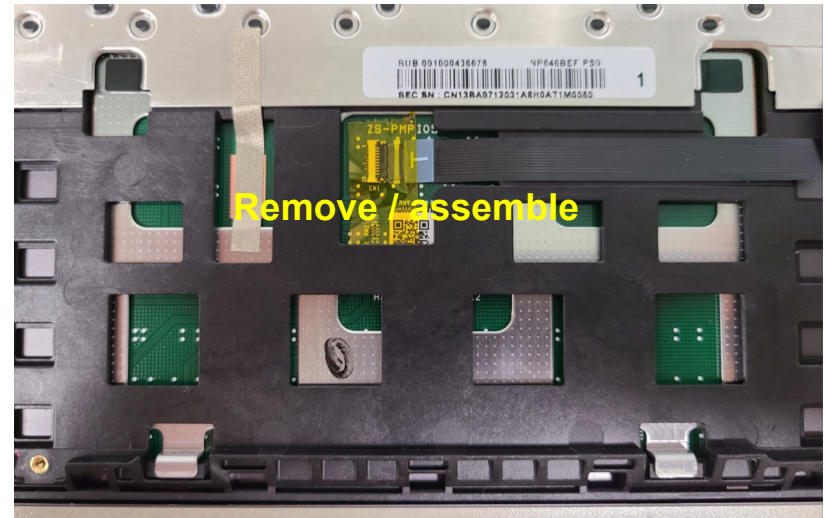
4. Disassembly and assembly change / Touchpad (1/3)

1. [Touchpad Assy] disassemble , assemble method has been changed.

- ▢ Existing Method : disassemble rear Case → disassemble battery → remove touchpad screw → disassemble touchpad Assy
- ▢ New Method : disassemble rear Case → disassemble battery → remove removable Tape → disassemble touchpad Assy

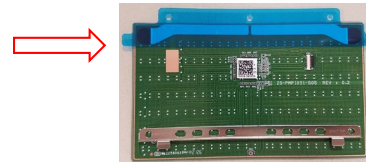


Existing Method



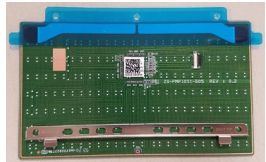
New Method

- ▢ Touchpad Assy unit : touchpad Assy + Removable Tape
- ▢ only Removable Tape can be requested

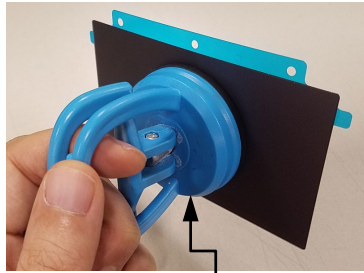


4. Disassembly and assembly change / Touchpad (2/3)

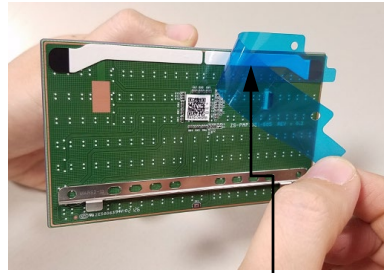
2. How to attach touchpad removable Tape



ASSY TOUCHPAD-SVC
(BA98-03264A)



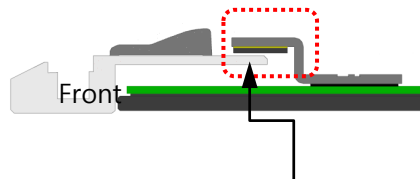
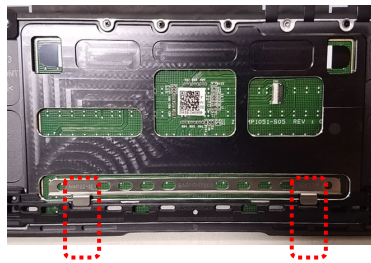
Disassemble ASSEMBLY TOUCHPAD-SVC
Using rear disassemble jig



Remove protect tape



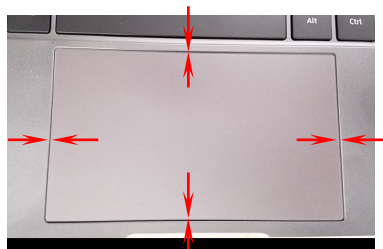
Assemble from the bottom of Bracket
Touchpad hook



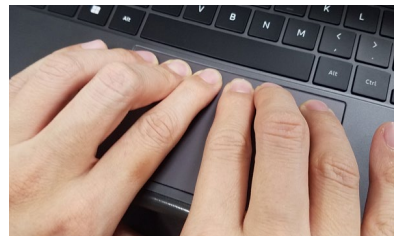
Check the seating of the bottom of Bracket
touchpad hook



Assemble while checking gap



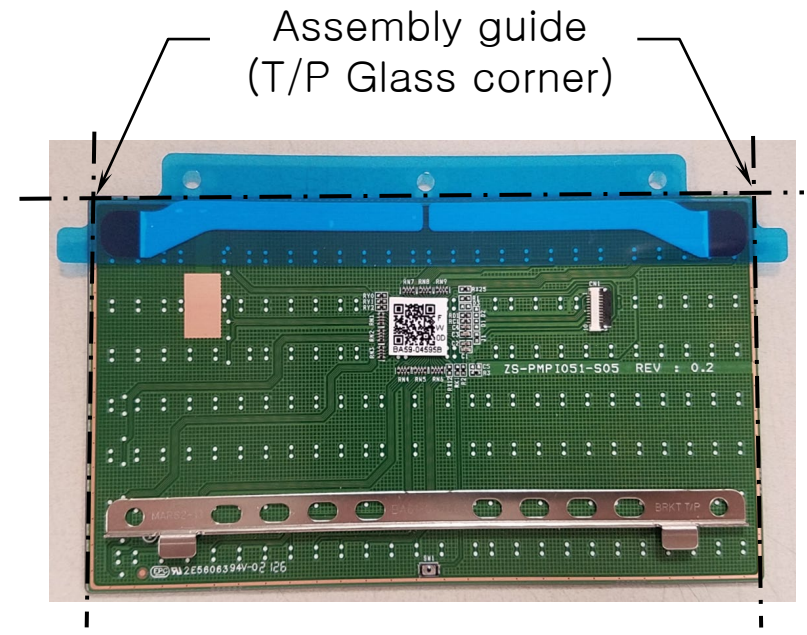
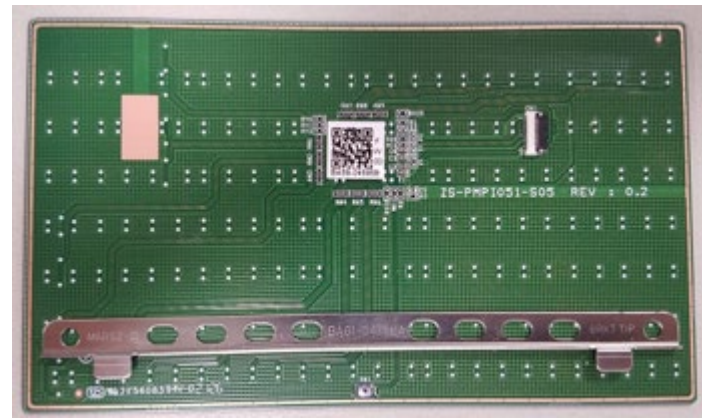
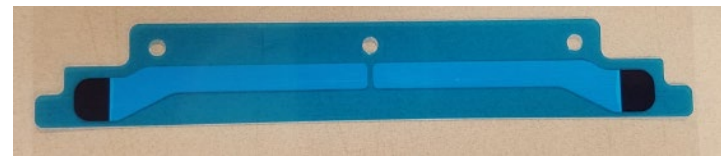
Checking Gap (Spec : 0.1~0.3mm)



Press the tape

4. Disassembly and assembly change / Touchpad (3/3)

3. How to attach touchpad Removable Tape



5. Rear Case / how to assemble foot rubber

Order	Procedure / Check Point
1.	Attach <u>2EA</u> of Rubber-Foot to the screw hole of Hinge side of Case-Rear . - [Check Point] There must no lifted up or poor inserted after attaching.
2.	Attach <u>2EA</u> of Rubber-Foot to the screw <u>hole</u> Speaker side of Case-Rear. - [Check Point] There must no lifted up or poor inserted after attaching.

There is no warble even if you change it and assemble it, but please follow the guide for official assemble

Hinge side



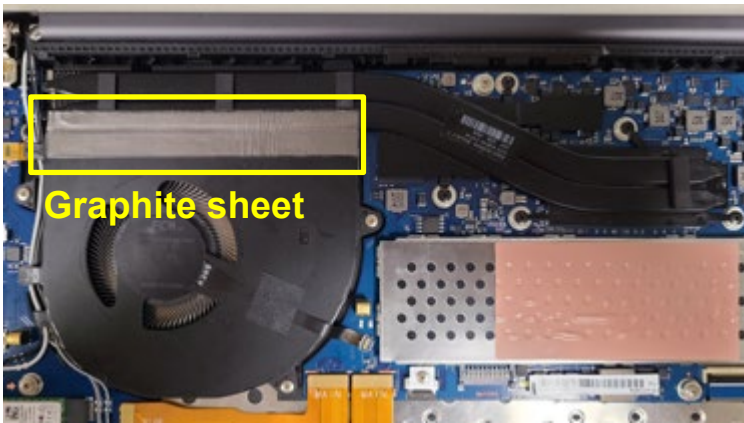
Speaker side



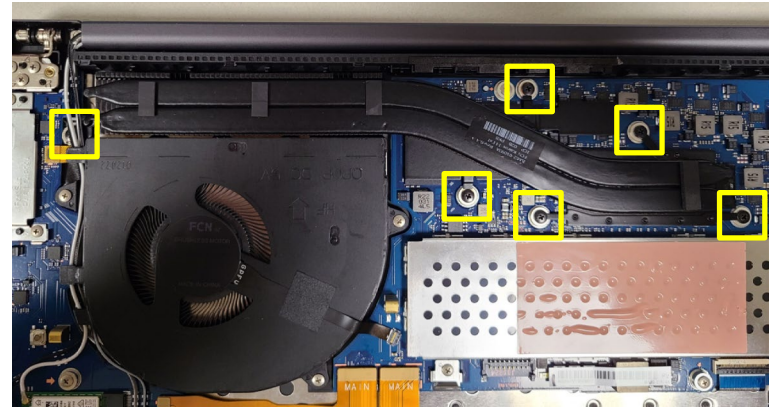
Rubber Foot Location and Shape		Part Name	Code	Structure
Speaker Side		RUBBER FOOT DOWN	BA67-01470D	Down side rubber Rib shape "X"
Hinge Side		RUBBER FOOT UP	BA67-01469C	Upper side rubber Rib shape "+"

6. Heatpipe

1



2

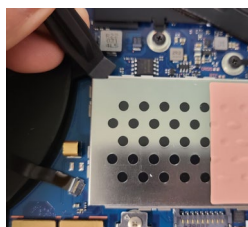
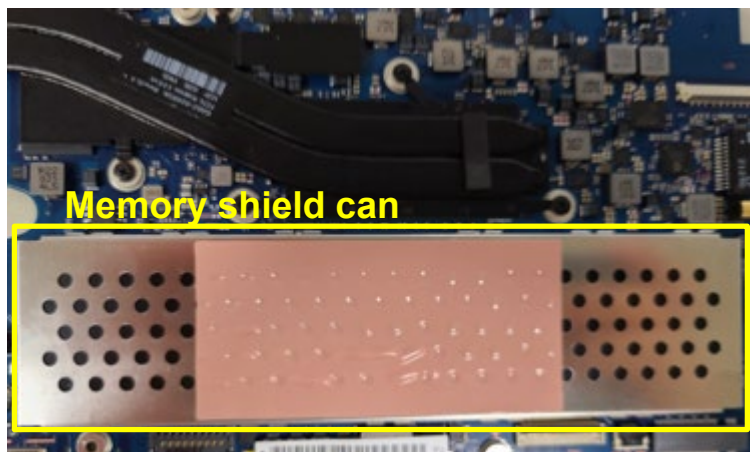


Heatpipe Disassembly

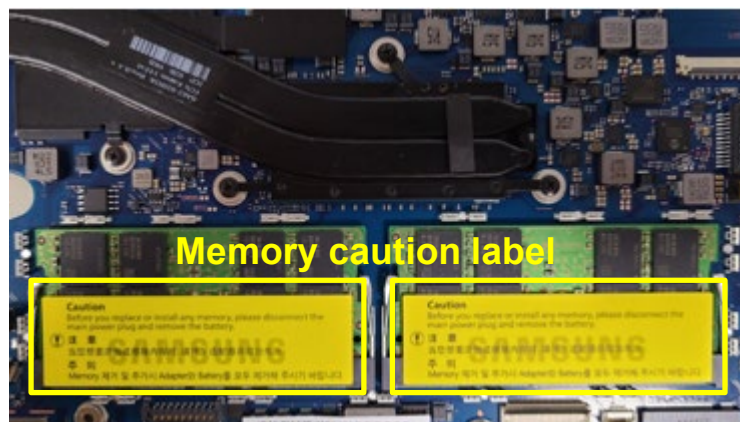
1. Detach Graphite sheet (Once you remove it, **Do not Re-use it.** material code BA02-03595A)
2. Disassemble screw (6 Places) and then disassemble Heatpipe

7. Memory Sodimm

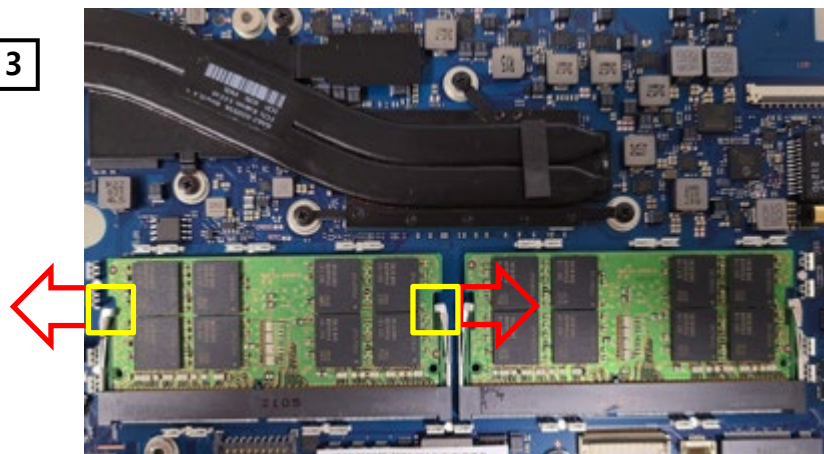
1



2



3



Memory Sodimm Disassembly

1. insert jig into the corner of Memory shield can. Disassemble Memory shield can.
2. Detach Memory caution label
3. push yellow box to outside, disassemble memory sodimm